

September 9/2013

CAC – CHARITY BLOCK

4 – PATCH - Beginner

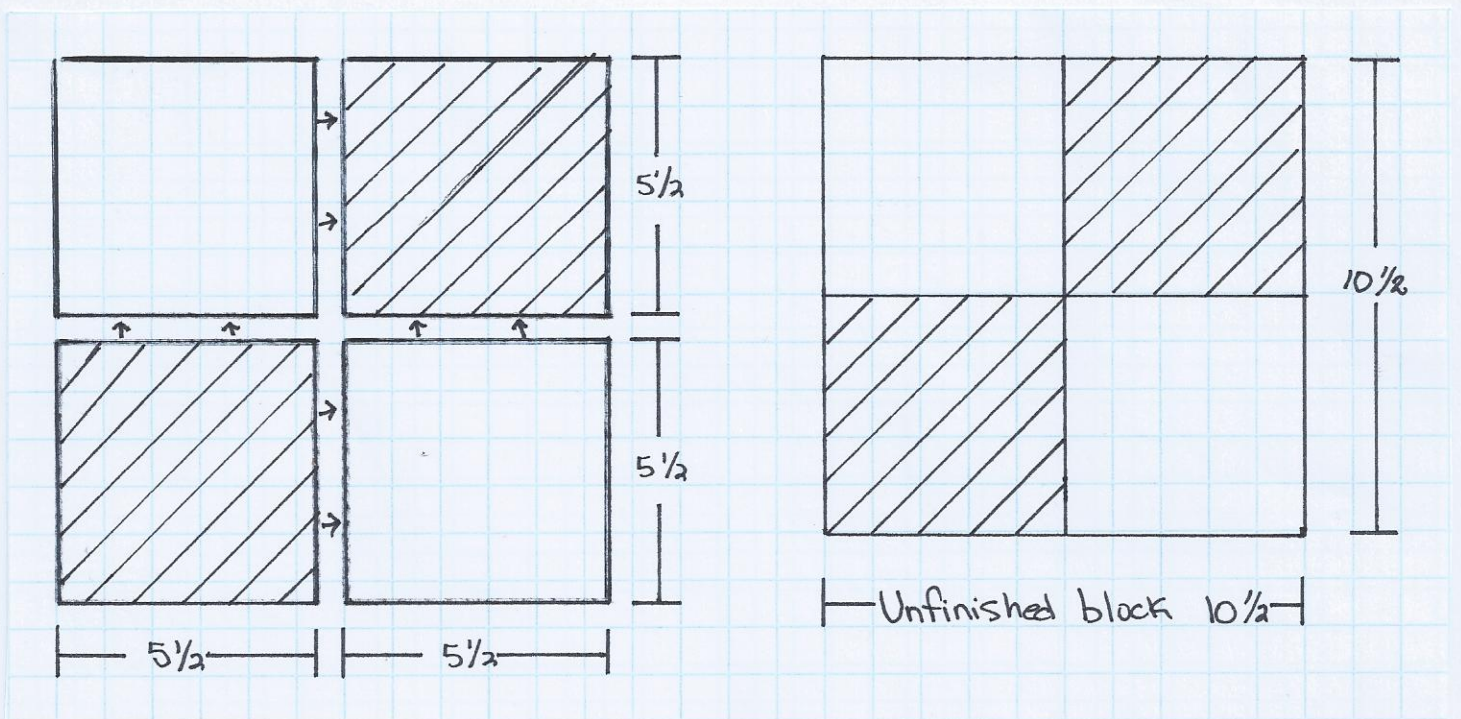
Materials Required:

2pcs – white, or white on white fabric $5\frac{1}{2} \times 5\frac{1}{2}$

2pcs – brightly colored toddler fabric $5\frac{1}{2} \times 5\frac{1}{2}$

Layout

Sew blocks together using a $\frac{1}{4}$ seam to form an unfinished block of $10\frac{1}{2} \times 10\frac{1}{2}$.



Disappearing 4 Patch – Advanced

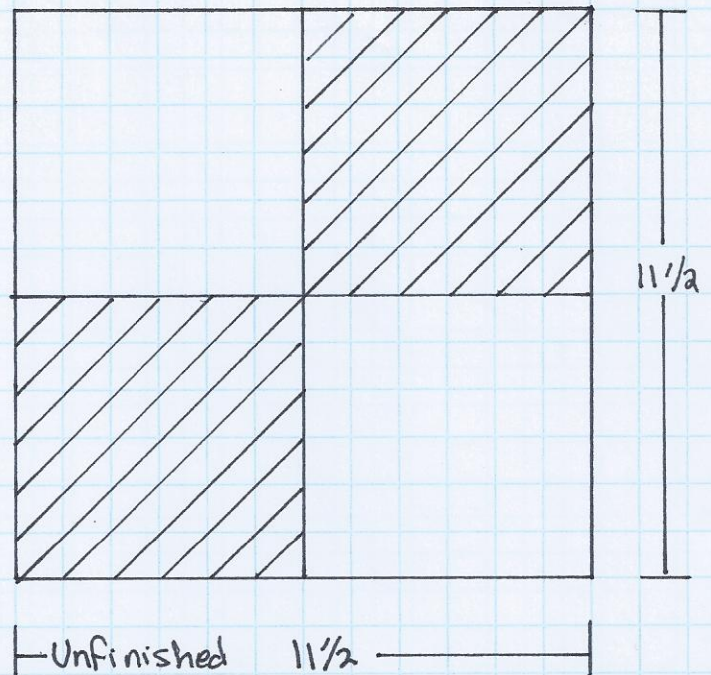
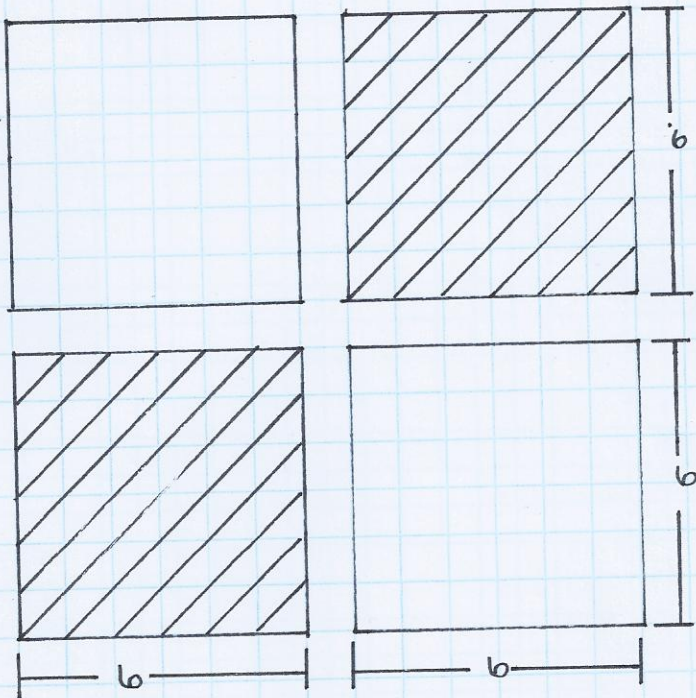
Materials required:

2pcs – white, or white on white fabric 6 x 6

2pcs – brightly colored toddler fabric 6 x 6

Layout and sew squares together, using a $\frac{1}{4}$ inch seam allowance, as per 4 patch instructions above.

Unfinished block will measure $11\frac{1}{2}$ x $11\frac{1}{2}$.



You will now take this block and make 4 cuts on it.

Take your ruler and place it on the center seam

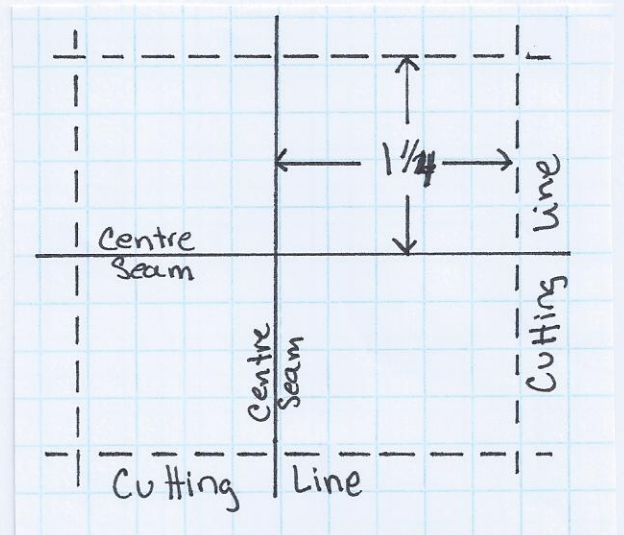
at the $1\frac{1}{4}$ " mark. Make your 1st cut.

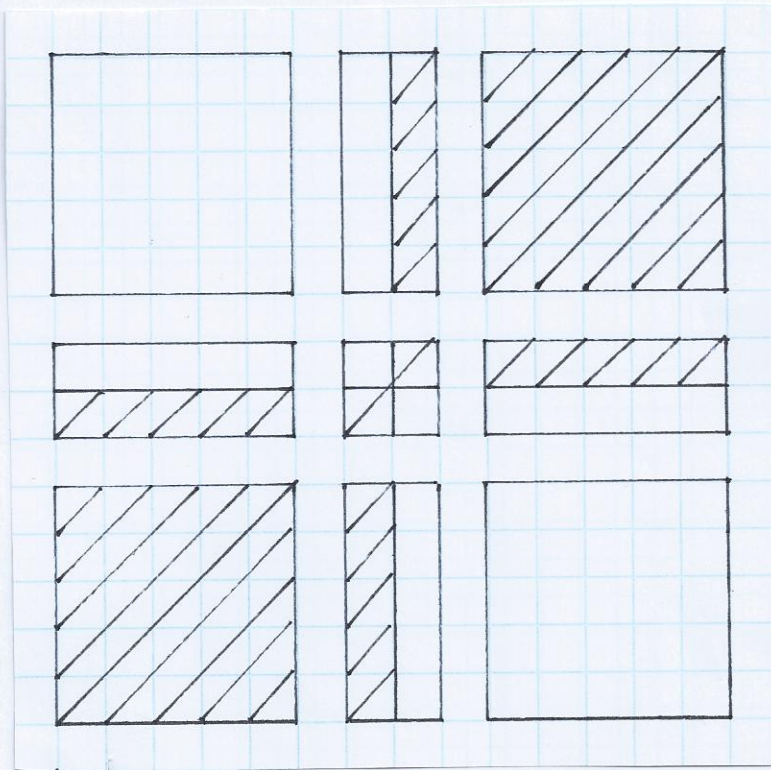
Rotate your cutting board, NOT THE FABRIC,

$\frac{1}{4}$ turn and repeat the process.

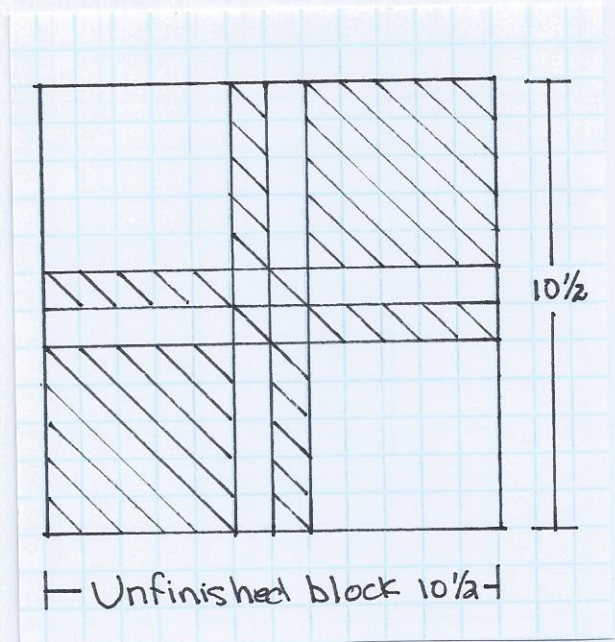
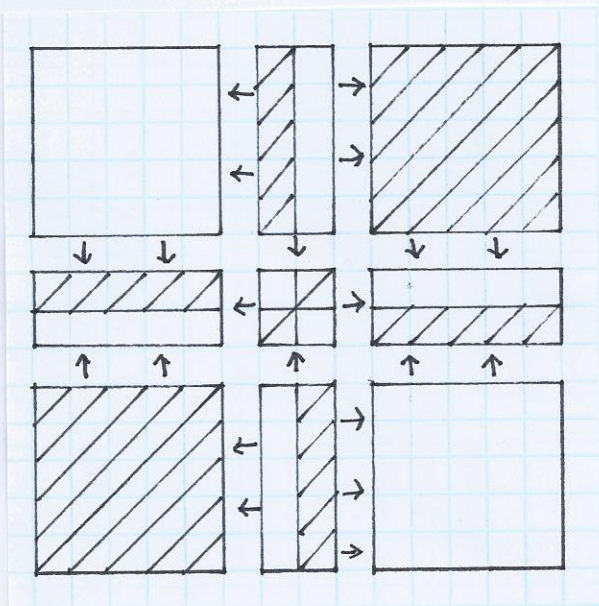
Do this step two more times, for a total of 4 cuts.

You will end up with 9 pieces. (See Drawing)





Take the four center pieces (dual fabric with the centre seam down the middle) that measure $2\frac{1}{2} \times 5$, and turn them around 180 degrees so that the print fabric is lying next to the white fabric.



Sew the 9 pieces back together with a $\frac{1}{4}$ seam allowance, and you will have an unfinished "Disappearing 4 Patch" block that measures $10\frac{1}{2} \times 10\frac{1}{2}$. Enjoy!